

What's New & Different in WordPerfect
(From Windows Version 6.1 to Version 12)

TABLE OF CONTENTS

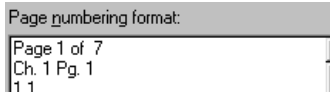
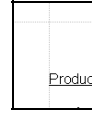
<u>Productivity & Performance / Tools / Toolbars / Menus</u>	<u>3</u>
Margin Guidelines (v. 8/9/10/11/12)	<u>3</u>
Page X of Y (v. 8/9/10/11/12)	<u>3</u>
Shadow Cursor (v. 8/9/10/11/12)	<u>3</u>
PerfectExpert (v. 8/9/10/11/12)	<u>3</u>
Corel RealTime Preview (v. 9/10/11/12)	<u>3</u>
Embedded Fonts (v. 9/10/11/12)	<u>3</u>
Autoscroll (v. 9/10/11/12)	<u>3</u>
Open as Copy (v. 8/9/10/11/12)	<u>4</u>
Make-It-Fit (v. 7/8/9/10/11/12)	<u>4</u>
Print Preview (v. 9/10/11/12)	<u>4</u>
Browse buttons (v. 9/10/11/12)	<u>4</u>
Spell-As-You-Go (v. 8/9/10/11/12)	<u>4</u>
Format-As-You-Go (v. 8/9/10/11/12)	<u>4</u>
Prompt-As-You-Go (v. 8/9/10/11/12)	<u>4</u>
Grammar-As-You-Go (v. 7/8/9/10/11/12)	<u>4</u>
Property Bar (v. 8/9/10/11/12)	<u>5</u>
Application Bar (v. 8/9/10/11/12)	<u>5</u>
QuickWords (v. 8/9/10/11/12)	<u>5</u>
QuickCorrect (v. 7/8/9/10/11/12)	<u>5</u>
QuickMenus (v. 7/8/9/10/11/12)	<u>5</u>
QuickFormat (v. 8/9/10/11/12)	<u>5</u>
QuickFinder (v. 7/8/9/10/11/12)	<u>5</u>
QuickSpots (v. 7)	<u>6</u>
Enhanced Tables (v. 8/9/10/11/12)	<u>6</u>
Skewed table cells (v. 9/10/11/12)	<u>6</u>
Tables to Text / Text to Tables (v. 10/11/12)	<u>6</u>
Tables (v. 10/11/12)	<u>6</u>
Printing keyboard shortcut lists (v. 10/11/12)	<u>6</u>
Selecting text (v. 10/11/12)	<u>6</u>
Variables (v. 10/11/12)	<u>6</u>
Align and Distribute tool (v. 10/11/12)	<u>6</u>
Document Review Margin Markers (v. 10/11/12)	<u>7</u>
Auto-suggest Filename (v. 10/11/12)	<u>7</u>
Zoom Tool (v. 10/11/12)	<u>7</u>
Two-page View (v. 10/11/12)	<u>7</u>
Toolbar & Property Bar Pickers (v. 10/11/12)	<u>7</u>
Comments (v. 10/11/12)	<u>7</u>
Merge (v. 10/11/12)	<u>7</u>
Navigation (v. 10/11/12)	<u>7</u>
Ruler (v. 10/11/12)	<u>7</u>
Reveal Codes Printing (v. 11/12)	<u>7</u>
Document Map (v. 11/12)	<u>7</u>
Microsoft Word Compatibility Toolbar (v. 12)	<u>8</u>
Menus (v. 9/10/11/12)	<u>8</u>

<u>Internet / Web</u>	<u>8</u>
HTML Support (v. 9/10/11/12)	<u>8</u>
HTML Publishing (v. 12)	<u>8</u>
SpeedLinks (v. 9/10/11/12)	<u>9</u>
XML Capabilities (v. 9/10/11/12)	<u>9</u>
Trellix 2 Integration (v. 9/10/11/12)	<u>9</u>
 <u>Integration / Conversions / Legal Tools / Reference</u>	 <u>9</u>
In-Place Editing (v. 9/10/11/12)	<u>9</u>
In-Place Activation (v. 9/10/11/12)	<u>9</u>
Document Routing (v. 11/12)	<u>9</u>
Outlook Address Book (v. 11/12)	<u>9</u>
Legal Tools (v. 11/12)	<u>9</u>
Reference Tools (v. 11/12)	<u>9</u>
WordPerfect Wireless Office (v. 12)	<u>10</u>
Conversion Utility (v. 9/10/11/12)	<u>10</u>
 <u>Graphics / Publishing</u>	 <u>10</u>
Enhanced charting module (v. 8/9/10/11/12)	<u>10</u>
Enhanced shapes (v. 9/10/11/12)	<u>10</u>
SGML Editor (v. 9/10/11/12)	<u>10</u>
Publish to PDF (v. 9/10/11/12)	<u>10</u>
TextArt (v. 9/10/11/12)	<u>10</u>
Publish to XML (v. 11/12)	<u>10</u>
 <u>Miscellaneous Office Features</u>	 <u>11</u>
PerfectScript (v. 9/10/11/12)	<u>11</u>
Support for Scripting Languages (v. 9/10/11/12)	<u>11</u>
Intel MMX Support (v. 8/9/10/11/12)	<u>11</u>
Corel Versions (v. 8/9/10/11/12)	<u>11</u>
Install-As-You-Go (v. 9/10/11/12)	<u>11</u>
Corel A.R.M. (Application Recovery Manager) (v. 10/11/12)	<u>11</u>
Location Manager (v. 10/11/12)	<u>11</u>
Corel Connector (v. 10/11/12)	<u>11</u>
Pocket Oxford Dictionary (v. 10/11/12)	<u>11</u>
Bitstream Font Navigator (v. 9/10/11/12)	<u>11</u>
Desktop Application Director (v. 9/10/11/12)	<u>11</u>
Speech Recognition (v. 9)	<u>12</u>
Dragon Naturally Speaking (v. 10/11/12)	<u>12</u>
Fonts, Clipart and Photos (v. 9/10/11/12)	<u>12</u>
Equation Editor (v. 10/11/12)	<u>12</u>
Quick View Plus (v. 9/10/11/12)	<u>12</u>
WP Office File Filters (v. 9/10/11/12)	<u>12</u>
WP Office Software Developer's Kit (SDK) (v. 9/10/11/12)	<u>12</u>
Workspace Manager (v. 12)	<u>12</u>
WordPerfect OfficeReady (v. 12)	<u>12</u>

NEW FEATURES

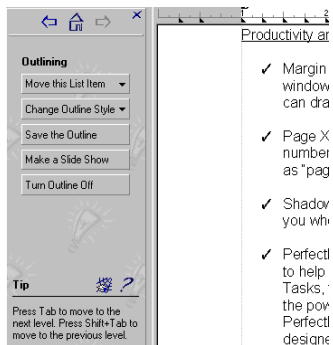
Productivity & Performance / Tools / Toolbars / Menus

Margin Guidelines (v. 8/9/10/11/12) - Blue margin guidelines appear in your document window to let you know where your printing boundaries are set. You can drag these guidelines to change your margins or columns.



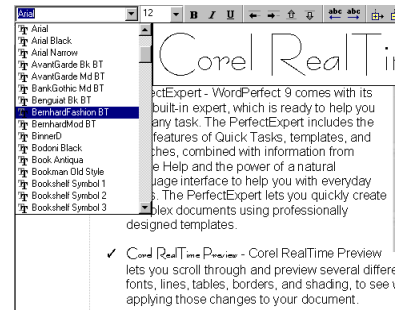
Page X of Y (v. 8/9/10/11/12) - WordPerfect includes several new page numbering options, including Page x of y format (such as "page 3 of 9").

Shadow Cursor (v. 8/9/10/11/12) - When you move your mouse pointer, a shadow cursor shows you where the insertion point will be when you click. Also, the Shadow Cursor allows you to place your cursor on a blank portion of the screen, and places codes as necessary up to the position of the cursor.



PerfectExpert (v. 8/9/10/11/12) - WordPerfect now comes with a built-in expert, which is ready to help you with any task. The PerfectExpert includes the best features of the older Quick Tasks, templates, and Coaches, combined with information from online Help and the power of a natural language interface to help you with everyday tasks. The PerfectExpert lets you quickly create complex documents using professionally designed templates. WordPerfect Office 12 includes a number of templates, and a variety of other templates are available for download from Corel's website.

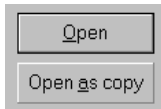
Corel RealTime Preview (v. 9/10/11/12) - Corel RealTime Preview lets you scroll through and preview several different formatting options, such as fonts (and QuickFonts), underline, drop caps, lines, tables, borders, shading, and other formatting features to see what they look like, without applying those changes to your document.



Embedded Fonts (v. 9/10/11/12) - WordPerfect now lets you use the Embedded Font feature. If you choose Embedded Fonts when saving your document, your fonts will be compressed and saved with the file data. Now your favorite fonts will go wherever your file goes for the presentation that you expect.

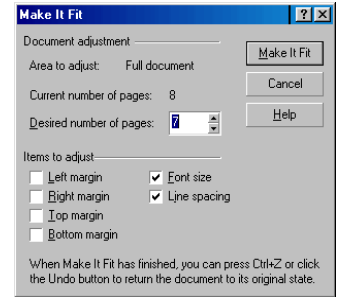
Autoscroll (v. 9/10/11/12) - Autoscroll lets you scroll through a document without using the arrow keys or the scroll bars. When you point the Autoscroll arrow in the direction you want to move, you can scroll through the document. The scrolling speed increases when you move the arrow further from the Autoscroll tool and slows when you move the arrow closer to the Autoscroll tool.





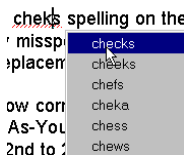
Open as Copy (v. 8/9/10/11/12) - This feature allows you to open an existing copy in Read-Only mode. This means that when it is time to save the file, even if you forget to use the Save As command, you will automatically be in the Save As dialog box, which forces you to save the file with a new name, leaving the original file intact.

Make-It-Fit (v. 7/8/9/10/11/12) - WordPerfect 7 brought out the Make-It-Fit feature, which gives you the tools to make a document fit into a specified number of pages by modifying margins, font size or line spacing. WordPerfect 9 enhanced the Make-It-Fit feature by giving you the ability to fit sections of your document into a specified number of pages without affecting other areas where fitting specifications may be different.



Print Preview (v. 9/10/11/12) - Although WordPerfect creates documents in a WYSIWYG environment, many users have requested a Print Preview option. WP's Print Preview feature now lets you view your document as a single page or double pages. Print Preview is fully compatible with Corel RealTime Preview, which lets you experiment with formatting options, such as fonts, lines, tables, borders, and shading, without applying them to your document. Print Preview is also fully editable; therefore, you do not have to switch back to regular view to make changes to your document.

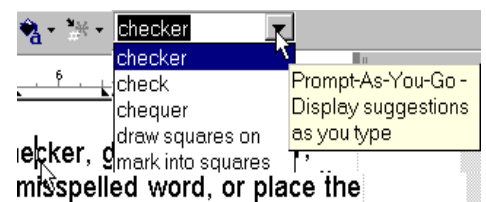
Browse buttons (v. 9/10/11/12) - The browse buttons make navigation within a document more intuitive. WordPerfect lets you navigate through a document in the same way that you navigate through an Internet document.



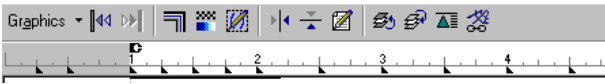
Spell-As-You-Go (v. 8/9/10/11/12) - Spell-As-You-Go checks spelling on the fly. As you type, red hash marks appear beneath any potentially misspelled word. You can then right-click individual words to see a list of possible replacements.

Format-As-You-Go (v. 8/9/10/11/12) - WordPerfect now corrects accidental cAPLOCKS by changing the case automatically as you type. Other Format-As-You-Go changes occur while you type, such as converting two hyphens (- -) to a dash (–) and 2nd to 2nd after you insert a space. If you type an asterisk (*), then press Tab, Format-As-You-Go replaces the asterisk with a bullet and inserts an indent. This is great for creating bullet lists. You can even insert a horizontal line by typing three hyphens (- - -) followed by Enter on a new line.

Prompt-As-You-Go (v. 8/9/10/11/12) - Prompt As-You-Go functions as a spell checker, grammar checker, and a thesaurus, depending on where your cursor is placed. If you type a misspelled word, or place the cursor on a misspelled word or a possible grammar error, the Prompt As-You-Go list box displays a list of corrections. If your cursor in on a correctly spelled word (or text that has not grammar errors), the Prompt As-You-Go list box displays a list of possible synonyms.

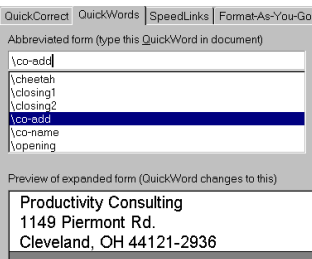
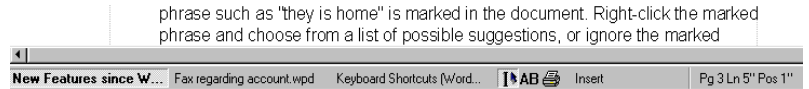


Grammar-As-You-Go (v. 7/8/9/10/11/12) - The Grammar-As-You-Go feature is another timesaving feature that lets you recognize, and fix common grammar problems as you type. For example, a phrase such as "they is home" is marked in the document. Right-click the marked phrase and choose from a list of possible suggestions, or ignore the marked phrase and move on.



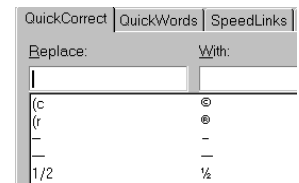
Property Bar (v. 8/9/10/11/12) - This powerful context-sensitive bar changes depending on the task you are doing. For example, when you are working on a table, the Property Bar displays table tools. When you select a graphic, the Property Bar changes to graphics tools.

Application Bar (v. 8/9/10/11/12) - The powerful new Application Bar lets you switch between documents, drag and drop information, and easily work with multiple documents. You can also display and change the current language on the Application Bar.



QuickWords (v. 8/9/10/11/12) - QuickWords is a method of assigning a shortcut name to text that you use often within various documents. You can create a QuickWord entry for a name consisting of 2 words or an entry that contains many pages of text. No matter what the length of the text is, you can recall the QuickWord entry anywhere and as often as you need it within any document.

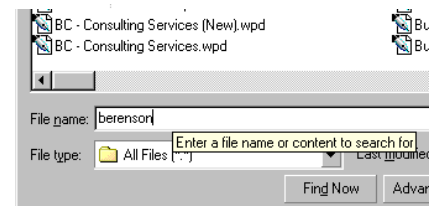
QuickCorrect (v. 7/8/9/10/11/12) - The QuickCorrect feature gives you the ability to automatically replace common spelling errors, mistyped words or to expand simple abbreviations. There are a number of words that come with the QuickCorrect list, such as day of the week, days of the month, etc. These words will automatically be capitalized if the first letter is typed in lowercase. You can also add any words or special characters to the QuickCorrect list.



QuickMenus (v. 7/8/9/10/11/12) - QuickMenus are menus that pop up in various windows by clicking the right mouse button. If you right-click in the middle of plain text, you will get a menu with miscellaneous features (Cut, Copy, Paste, Delete, Font, etc.). If you right-click in the top margin, you will get another menu (Header/Footer, Watermark). All of the items in these menus are also available from the main menu bar, although the QuickMenus can be a faster way to access some of these features.

QuickFormat (v. 8/9/10/11/12) - If you would like to copy the format of a specific block of text to another portion of text, the QuickFormat feature allows you to do that. When you turn on the QuickFormat feature (with your cursor in any formatted text), your cursor changes to a paintbrush. Then you can "paint" the new text with the formatting from the original text.

QuickFinder (v. 7/8/9/10/11/12) - You can use the Find button on file management dialog boxes to find files that meet the criteria you specify. For example, you can search for a file type (such as *.WPD) or the file content (such as "WordPerfect").



QuickSpots (v. 7) - QuickSpots provided direct access to editing features for certain objects in a document, such as paragraphs or tables. WordPerfect 8 improved on this idea by including more than 20 different Property Bars that appear when you click on a particular object.

Enhanced Tables (v. 8/9/10/11/12) - Tables have always been a hallmark of Corel WordPerfect. You can insert tables that span the full page width, or just a portion of it. When you click on a table, the Table Property Bar appears giving you one-click access to size rows dynamically within a table and quickly join or split cells with a single click and drag. Formatting is easy using QuickFormat for tables. Simply select the table cell that contains the formatting you like, choose QuickFormat, and apply the format to the cell you want to modify.



Skewed table cells (v. 9/10/11/12) - WordPerfect now has a new table option to skew the top row or the left or right column of a table. Unless you specify otherwise, any text that you type in a skewed cell will be skewed as well. You can also change the angle of the skew and specify other skew options.

	Jan	Feb	Mar	Tot
Units	72	91	81	244
Bolts	35	47	38	120
Nails	77	98	89	264
Total	184	236	208	628

Tables to Text / Text to Tables (v. 10/11/12) - Lets you convert a table to delimited text, and document text to a tabular format, based on user-specified delimiters.

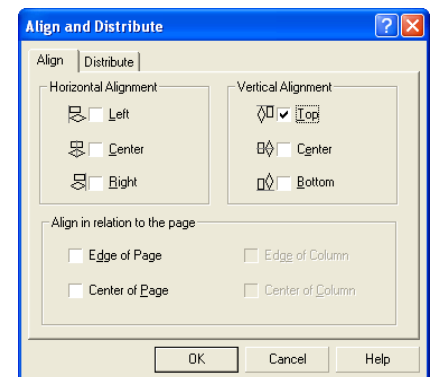
Tables (v. 10/11/12) - A new table menu has been added to the menu bar. Cells containing formulas are now marked with a colored indicator, and you can copy cell formulas by dragging. The *QuickSplit columns and rows* button on the Property Bar lets you split a cell into four cells (columns and rows). The Shadow Cursor now works in table cells.

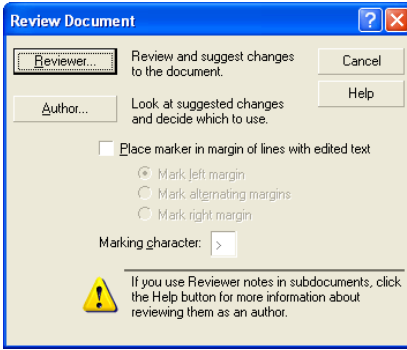
Printing keyboard shortcut lists (v. 10/11/12) - Lets you print a copy of the keyboard shortcuts. You can export the list to a file, and you can also customize the list.

11) - Easily select a sentence, paragraph, or page with your mouse or keyboard. Version 10 adds flexibility in selecting text, such as selecting a sentence, paragraph, page, entire document, as well as sections (secondary pages, chapters, and volumes), tabular columns and rectangles of text.

Variables (v. 10/11/12) - Lets you insert a variable placeholder into a document and change the contents later, updating all instances of the variable. Version 11 enhances the variable feature to make it easier to store, retrieve and reuse documents.

Align and Distribute tool (v. 10/11/12) - Lets you align and distribute objects in relation to themselves and the page.





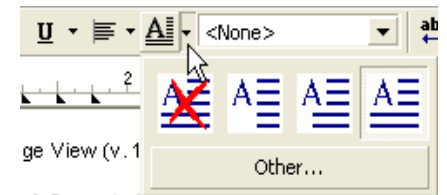
Document Review Margin Markers (v. 10/11/12) - Lets you add an indicator in the margin of a document to notify the author that the text has changed.

Auto-suggest Filename (v. 10/11/12) - When you save a document for the first time or as a new file, WordPerfect automatically inserts a suggested filename.

Zoom Tool (v. 10/11/12) - Lets you magnify certain areas of a document.

Two-page View (v. 10/11/12) - Supports Reveal Codes and writing tools.

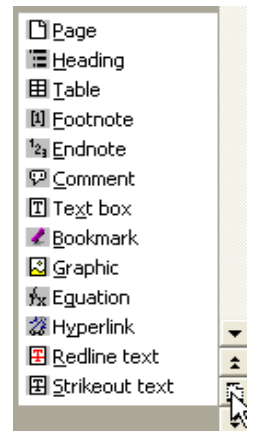
Toolbar & Property Bar Pickers (v. 10/11/12) - Lets you choose an option for underlining, undoing or redoing, adding drop caps, and other formatting options.



Comments (v. 10/11/12) - An enhanced comment bubble is less intrusive, fitting the length of the text only, and leaving no empty space in the bubble. You can also apply formatting to text, as well as insert a graphic, a table, and so on, within the comment bubble.

Merge (v. 10/11/12) - The Merge feature now allows more fields for each record and an improved keyboard merge dialog.

Navigation (v. 10/11/12) - The *Go To* feature now includes bookmarks, hyperlinks, redlined text, equations, graphics, and other items. The *Browse By* feature has been expanded, and a flyout allows you to select a browse method more quickly.



Ruler (v. 10/11/12) - Elements (for example, left margin adjust) have been redesigned and enlarged.

Reveal Codes Printing (v. 11/12) - Lets you print documents with the codes in place for easy troubleshooting.

Document Map (v. 11/12) - Lets you navigate complex documents.

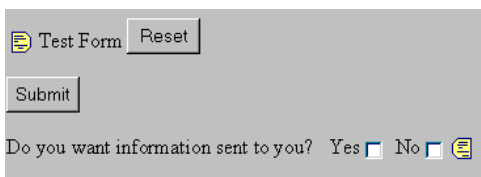
Microsoft Word Compatibility Toolbar (v. 12) - Now you can quickly convert a document to Microsoft Word with the click of a button. This new toolbar captures all of the common formats in one easy location. WordPerfect Office 12 also has another compatibility toolbar for Excel users converting files from Quattro Pro.



Menus (v. 9/10/11/12) - The menus in WordPerfect have undergone significant restructuring to improve access to the most frequently used features. The menus are also standardized across WordPerfect Office applications to make learning each application easier. Right-click the menu to select a menu similar to one you used in a previous version of WordPerfect.

- i. The Insert menu has grown to include several types of document objects such as graphics, watermarks, equations, headers and footers.
- ii. The Graphics menus is not available any more - the editing features for graphics are now available on the Property Bar. Select a graphic image (or a text box), and the Property Bar displays graphics features.
- iii. The File menu now contains Publish as HTML and Publish as PDF. The File - Send To menu gives you the option to send a file to: floppy disk, desktop (as a shortcut), mail recipient, and a number of other options.
- iv. The Outline and Bullets & Numbering features are consolidated in Insert - Outline/Bullets & Numbering.
- v. The abbreviations feature is renamed QuickWords and is moved to Tools - QuickWords.
- vi. Help Online, which was used to access additional technical and product information, is renamed Corel Web site.
- vii. Initial Document Style is renamed and is moved to File - Document - Current Document Style.
- viii. Initial Document Font is renamed and is moved to File - Document - Default Font.
- ix. Page Setup (Margins, Paper Size) is in Format - Page, and can also be found in File - Page Setup.

Internet / Web



HTML Support (v. 9/10/11/12) - Using the Internet Publisher, you can add form fields to your web document. These fields include radio buttons, check boxes, selection lists, and text boxes, making the gathering of information easier than ever. You can insert sound clips, image maps, and even Java applets to make your page exciting and easy to navigate. Version 10 adds increased flexibility and advanced page layout and formatting of Cascading Style Sheet support and allows conversion of WP documents for use on the web.

HTML Publishing (v. 12) - WP Office 12 can publish word processing documents, spreadsheets and presentations to HTML for viewing on the Web. The new Compatibility toolbars provide easy, one-click access to Publish to HTML functionality.

SpeedLinks (v. 9/10/11/12) - SpeedLinks lets you create Internet links – highlighted text in a World Wide Web document that helps you jump to another part of the same document or to another document on the World Wide Web. When you type text that begins with "www," "ftp," "http," or "mailto," SpeedLinks automatically converts the text to an Internet link.

Link: <http://www.corel.com>. www.corel.com, Sp
k to the Corel home page at URL <http://www.corel.com>.

You can even modify SpeedLinks to convert the link to more meaningful terms. For example, when you type "www.corel.com," SpeedLinks can replace the visible text with "Corel" and create a link to the Corel home page at URL <http://www.corel.com>.

XML Capabilities (v. 9/10/11/12) - XML (eXtensible Markup Language) provides a platform and application-independent environment for defining document architecture and document markup. WordPerfect lets you create, validate, and save XML documents in a familiar WYSIWYG environment. A structured tree view, shown in a separate window, provides an easy-to-read layout of the full document. WordPerfect automatically inserts and maintains tag pairs to create XML files. WordPerfect provides an editing environment that includes wizards, automatic element insertion, and automatic generation of documents, which makes document creation quick and easy. You can customize menus, toolbars, and keyboard mapping to create your own working environment. WordPerfect incorporates the Document Type Definition (DTD), layout information, and mapping files into a single WordPerfect template. For more information about XML, see the WordPerfect online Help.

Trellix 2 Integration (v. 9/10/11/12) - Trellix 2 Integration lets you create and organize professional, effective documents that can be published to HTML. Trellix can make long, complicated documents easy to understand and navigate; the integrated navigation map lets you visualize and access any part of your document quickly. Trellix documents resemble web pages, with easy-to-create links, and you can add spreadsheets, graphics, and other files.

Integration / Conversions / Legal Tools / Reference

In-Place Editing (v. 9/10/11/12) - In-Place Editing lets you edit an object without switching to a different window. Buttons and list boxes temporarily change to work specifically with that object.

Do you want information sent to you? Yes |

	Jan	Feb	Mar	Total
Units	72	91	81	244
Books	35	47	38	120
Notes	77	98	89	264
Total	184	236	208	628

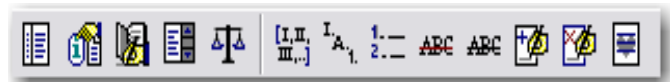
Right-click Settings.
Producti
Margi
appe
know
You

In-Place Activation (v. 9/10/11/12) - WordPerfect now uses the new In-Place Activation feature to help further integrate 3rd Party applications into WordPerfect Office. By double-clicking on an OLE object, the editing or development environment native to that object is initiated inside WordPerfect, providing seamless integration of 3rd Party applications.

Document Routing (v. 11/12) - Lets you automatically route a document for online review to several participants at once, one participant at a time, and allows each of the participants to see the changes made during each previous review. When you route a document, it is inserted in an e-mail as an attachment. You must have Microsoft Outlook as your default address book for this option to work.

Outlook Address Book (v. 11/12) - Lets you access data directly from an Outlook address book.

Legal Tools (v. 11/12) - Provides a specialized legal toolbar with features such as the Pleading Wizard, the Clipbook, the Concordance tool, and support for EDGAR electronic document filing.



Reference Tools (v. 11/12) - Newly designed user interface makes creation of reference tools easier.

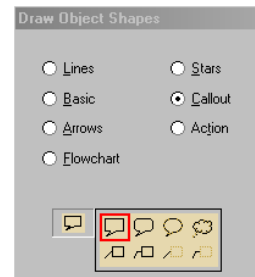
WordPerfect Wireless Office (v. 12) - Powered by ZIM, the new WordPerfect Wireless Office Suite gets you mobile with three wireless products that give you anytime, anywhere access to Microsoft Outlook email, calendar, reminders and more. ZIM SMS Office enables two-way communication ensuring that you stay on top of constantly changing information whether you, or others, are on the go. ZIM SMS Mail is a wireless e-mail offering that works with any POP3 e-mail account, regardless of what e-mail client software you use. ZIM SMS Chat is an exciting software application that enables instant two-way chats between computer and mobile phone users via SMS text messaging.

Conversion Utility (v. 9/10/11/12) - Corel has made significant compatibility enhancements to WordPerfect Office 12 so that you can share information with Microsoft Word, Microsoft Excel and Microsoft PowerPoint easier than ever before. In addition to the option of workspace switching, WordPerfect Office 12 preserves the formatting of your Microsoft Office files and also includes a conversion utility to assist you in batch converting large number of MS Word or legacy WordPerfect files, as well as other file formats, to WordPerfect 12. Also, each new version of WordPerfect continues to use the same file format as its previous versions (Corel WordPerfect 6, 7, 8, 9, 10, 11) - without requiring any conversion from these previous versions.

Graphics / Publishing

Enhanced charting module (v. 8/9/10/11/12) - The enhanced charting module provides additional chart types and capabilities.

Enhanced shapes (v. 9/10/11/12) - WordPerfect provides over 100 shapes. You can choose a shape from any of the new shape palettes or use the Basic Shapes, Arrows, Stars, Banners, and Flowcharting tools. Action buttons prompt the assignment of an action; Call out shapes have pointers that can be anchored anywhere in the document. All shapes have the new Text In Shapes feature, which allows text to be added into the shape on the fly.



SGML Editor (v. 9/10/11/12) - WordPerfect lets you create SGML documents in a familiar WordPerfect environment. WordPerfect lets you edit, markup text, and validate tags in SGML documents. You can also employ WordPerfect writing tools, such as Spell Check and QuickCorrect. You can hide SGML codes in the document window and use WordPerfect text formatting to make SGML documents easier to read on screen.

Publish to PDF (v. 9/10/11/12) - Adobe Acrobat Reader is included with WordPerfect Office. This application allows you to view, navigate and print PDF files across multiple platforms. You can save WordPerfect and Corel Presentations documents as PDF files. The PDF Publishing capabilities of WordPerfect Office 12 are very versatile - allowing you to publish documents to PDF format so that they are optimized with consideration for document quality, file size, and intended use. You can retain hyperlinks, generate bookmarks, embed fonts and optimize images according to specific needs.

TextArt (v. 9/10/11/12) - TextArt lets you transform words into designs. You can use multiple visual effects, such as font, color, and rotation options, to create professional looking 2-D or 3-D images. You can create a TextArt image yourself, or insert preset 2-D and 3-D images into documents. Saving an image as a separate file lets you use the image in a variety of projects. You can also change the font of a TextArt image by specifying the font type and style or insert iconic symbols and characters from any fonts and alphabets available to you.

Publish to XML (v. 11/12) - Lets you publish new and existing WordPerfect documents to the XML format.

Miscellaneous Office Features

PerfectScript (v. 9/10/11/12) - PerfectScript is a macro language for WordPerfect, Quattro Pro and Corel Presentations. It is a command-based language that lets you record the results of keystrokes or mouse selections, instead of recording the keystrokes themselves.

Support for Scripting Languages (v. 9/10/11/12) - WordPerfect Office 12 supports three scripting languages - PerfectScript, Microsoft Visual Basic for Applications and ObjectPAL (Object Paradox Application Language). PerfectScript is a macro system and scripting language developed specifically for WordPerfect Office applications, to help users create macros, recordings and scripts. ObjectPAL is a powerful, object-based, event-driven, visual programming language tightly integrated with Paradox. MS Visual Basic for Applications lets developers build custom business solutions by automating and integrating off-the-shelf software applications to meet specific customer needs. Scripts and macros developed in either language from earlier versions of WordPerfect Office remain fully functional.

Intel MMX Support (v. 8/9/10/11/12) - Corel WordPerfect Suite 8 was the first software suite to support the Intel Pentium with MMX technology. You do not need to have a computer equipped with MMX technology to run Corel WordPerfect 8, 9, 10 or 11. However, an MMX-enhanced computer can improve the performance of Corel WordPerfect by reducing the time it takes to redraw bitmap and vector graphics and improving speed in other areas.

Corel Versions (v. 8/9/10/11/12) - Corel Versions solves the problem of trying to control and track multiple copies of the same file. Instead of trying to keep track of all your updates to a file by saving new versions of it under different file names, Corel Versions lets you save the changes you have made to each successive version of your file.

Install-As-You-Go (v. 9/10/11/12) - The Install-As-You-Go feature helps you minimize the hard disk space required by WordPerfect Office 2000 applications by including only the bare necessities. If any non-installed item is selected, you will be asked if you want to install it.

Corel A.R.M. (Application Recovery Manager) (v. 10/11/12) - Helps you recover from most application failures without losing your work.

Location Manager (v. 10/11/12) - Makes sure the WordPerfect Office 2002 applications can start without errors, even when files are missing or damaged.

Corel Connector (v. 10/11/12) - If you have an Internet connection, you can connect to product-specific information, newsgroups, updates, technical support and more using the new Corel Connector.

Pocket Oxford Dictionary (v. 10/11/12) - Provides the meaning, history and pronunciation of more than 30,000 words.

Bitstream Font Navigator (v. 9/10/11/12) - This font manager lets you find and install fonts, organize fonts into manageable groups, and view and print font samples.

Desktop Application Director (v. 9/10/11/12) - The DAD lets you access the major applications in WP Office from the Windows taskbar, which can eliminate shortcuts. You can customize DAD to include any application or executable file, which reduces the need to navigate through the Windows Start menu.

Speech Recognition (v. 9) / Dragon Naturally Speaking (v. 10/11/12) - NOTE: Not all WP Office editions include this feature. Dragon Naturally Speaking 5 is a powerful voice dictation application software that lets you create and format text by using a number of pre-defined commands, or by accessing various menu and dialog options by voice. You can use the program to dictate into popular e-mail applications and to browse the Web. DNS features a high level of speed and accuracy, and because of its ability to learn, the speed and accuracy of the software increase with each use. DNS is integrated in WordPerfect.

Fonts, Clipart and Photos (v. 9/10/11/12) - WP Office offers an extensive collection of fonts (more than 1,000 TrueType and Type 1 fonts), clipart (more than 12,000 clipart images with a full-color Libraries Catalog, in PDF format) and photos (more than 200). Fonts, clipart and photos can be installed on a network to give multiple users access without installing them on individual systems.

Equation Editor (v. 10/11/12) - Equation Editor lets you insert and format mathematical and scientific equations in a WordPerfect document.

Quick View Plus (v. 9/10/11/12) - Quick View Plus is an application designed to let you share files with ease. You can view, copy, and print the contents of more than 200 Windows, MS-DOS, Macintosh, and Internet file formats, even if you do not have the native application installed on your computer. Quick View Plus can be integrated into e-mail applications, including CorelCENTRAL Mail, Netscape Messenger, Eudora, Microsoft Outlook, and Microsoft Exchange.

WP Office File Filters (v. 9/10/11/12) - File filters let you open and edit documents created in MS Office or Lotus SmartSuite applications. You can also save WordPerfect Office documents in MS Office or Lotus SmartSuite formats.

WP Office Software Developer's Kit (SDK) (v. 9/10/11/12) - A set of tools that lets software developers customize WP Office applications for commercial or business use. The SDK includes a) online Help for the SDK, b) OLE automation samples, c) PerfectScript tools, and d) tools and utilities, including code generation wizards for third-party add-ons to WordPerfect, QuattroPro, and Corel Presentations; utilities to monitor events in WordPerfect and Corel Presentations; and a file format parsing tool.

Workspace Manager (v. 12) - When WordPerfect is started, the user can select from 4 different workspace modes - legacy WordPerfect, WordPerfect 12, WordPerfect Legal and Microsoft Office. For new users who have recently switched from MS Office, the Microsoft Office workspace simulates Word, which users may find easier to use until they are more accustomed to working with the keystrokes, menus and toolbars of WordPerfect Office 12.



WordPerfect OfficeReady (v. 12) - This feature allows you to easily organize, preview and access your WordPerfect Office 12 templates in one easy-to-use browser. The OfficeReady browser ships with 40 additional templates and you can easily find many more by using the browser to find templates online.

Index of New Features

Align and Distribute tool, [6](#)
Application Bar, [5](#)
Auto-suggest Filename, [7](#)
Autoscroll, [3](#)
Bitstream Font Navigator, [11](#)
Browse buttons, [4](#)
Comments, [7](#)
Conversion Utility, [10](#)
Corel Applic Recovery Mgr, [11](#)
Corel Connector, [11](#)
Corel RealTime Preview, [3](#)
Corel Versions, [11](#)
Desktop Application Director, [11](#)
Document Map, [7](#)
Document Review Margin Markers, [7](#)
Document Routing, [9](#)
Dragon Naturally Speaking, [12](#)
Embedded Fonts, [3](#)
Equation Editor, [12](#)
File Filters, [12](#)
Fonts, Clipart and Photos, [12](#)
Format-As-You-Go, [4](#)
Grammar-As-You-Go, [4](#)
Graphics
 Enhanced charting module, [10](#)
 Enhanced shapes, [10](#)
 Publish to PDF, [10](#)
 Publish to XML, [10](#)
 SGML Editor, [10](#)
 TextArt, [10](#)
HTML Publishing, [8](#)
HTML Support, [8](#)
In-Place Activation, [9](#)
In-Place Editing, [9](#)
Install-As-You-Go, [11](#)
Intel MMX Support, [11](#)
Internet / Web
 Wireless Office, [10](#)
Legal Tools, [9](#)
Location Manager, [11](#)
Make-It-Fit, [4](#)
Margin Guidelines, [3](#)
Menus, [8](#)
Merge, [7](#)
Microsoft Word Compatibility Toolbar, [8](#)
Navigation, [7](#)
OfficeReady, [12](#)
Open as Copy, [4](#)
Outlook Address Book, [9](#)
Page X of Y, [3](#)
PerfectExpert, [3](#)
PerfectScript, [11](#)
Pocket Oxford Dictionary, [11](#)
Print Preview, [4](#)
Printing keyboard lists, [6](#)
Prompt-As-You-Go, [4](#)
Property Bar, [5](#)
Quick View Plus, [12](#)
QuickCorrect, [5](#)
QuickFinder, [5](#)
QuickFormat, [5](#)
QuickMenus, [5](#)
QuickSpots, [6](#)
QuickWords, [5](#)
Reference Tools, [9](#)
Reveal Codes Printing, [7](#)
Ruler, [7](#)
Scripting Language Support, [11](#)
Selecting text, [6](#)
Shadow Cursor, [3](#)
Software Developer's Kit, [12](#)
Speech Recognition, [12](#)
SpeedLinks, [9](#)
Spell-As-You-Go, [4](#)
Tables
 Conversion - table / text, [6](#)
 Enhanced, [6](#)
 Skewed table cells, [6](#)
 Table menu, [6](#)
Toolbar & Property Bar Pickers, [7](#)
Trellix 2 Integration, [9](#)
Two-page View, [7](#)
Variables, [6](#)
Wireless Office, [10](#)
Workspace Manager, [12](#)
XML Capabilities, [9](#)
Zoom Tool, [7](#)

Alphabetical List of New Features Introduced - by Version

Features Introduced in Version 7

- Grammar-As-You-Go
- Make-It-Fit
- QuickCorrect
- QuickFinder
- QuickMenus
- QuickSpots

Features Introduced in Version 8

- Application Bar
- Corel Versions
- Enhanced Tables
- Enhanced charting module
- Format-As-You-Go
- Intel MMX Support
- Margin Guidelines
- Open as Copy
- Page X of Y
- PerfectExpert
- Prompt-As-You-Go
- Property Bar
- QuickFormat
- QuickWords
- Shadow Cursor
- Spell-As-You-Go

Features Introduced in Version 9

- Autoscroll
- Bitstream Font Navigator
- Browse buttons
- Conversion Utility
- Corel RealTime Preview
- Desktop Application Director
- Embedded Fonts
- Enhanced shapes
- Fonts, Clipart and Photos
- HTML Support
- In-Place Activation
- In-Place Editing
- Install-As-You-Go
- Menus
- PerfectScript
- Print Preview
- Publish to PDF
- Quick View Plus
- SGML Editor
- Skewed table cells
- Speech Recognition
- SpeedLinks
- Support for Scripting Languages
- TextArt
- Trellix 2 Integration
- WP Office Software Developer's Kit (SDK)
- WP Office File Filters
- XML Capabilities

Features Introduced in Version 10

- Align and Distribute tool
- Auto-suggest Filename
- Comments
- Corel Connector
- Corel A.R.M. (Application Recovery Manager)
- Document Review Margin Markers
- Dragon Naturally Speaking
- Equation Editor
- Location Manager
- Merge
- Navigation
- Pocket Oxford Dictionary
- Printing keyboard shortcut lists
- Ruler
- Selecting text
- Tables
- Tables to Text / Text to Tables
- Toolbar & Property Bar Pickers
- Two-page View
- Variables
- Zoom Tool

Features Introduced in Version 11

- Document Routing
- Document Map
- Legal Tools
- Outlook Address Book
- Publish to XML
- Reference Tools
- Reveal Codes Printing

Features Introduced in Version 12

- HTML Publishing
- Microsoft Word Compatibility Toolbar
- WordPerfect OfficeReady
- WordPerfect Wireless Office
- Workspace Manager